



RÉPUBLIQUE
FRANÇAISE

Liberté
Égalité
Fraternité

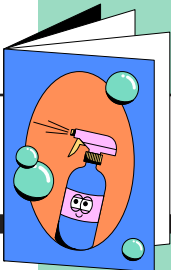


FIGHT AGAINST COCKROACHES CONTROL PROTOCOL

Cockroaches are rampant insects and can multiply quickly in housing facilities. Pests presence includes health hazard as they carry bacteria.

Everybody's vigilance and strict hygiene rules are necessary to pest management.

Lyon Crous has developed new resources dedicated to cockroach management, but efficiency also depends on the residents' implication and vigilance.



Find tips on how to keep the pest out
of your apartment in our guide
"A happier home" available at the reception desk.

Nouvelle procédure 2023

PREVENTIVE SOLUTIONS

Every residence receives preventive pest control services all year long in order to avoid infestation.

Despite preventive control, some residence shared units or apartments can be infested by cockroaches if the conditions are attractive to pests.

Remedial pest control will be carried when necessary.

If you have trouble with pests, please contact your residence reception desk ASAP.

REMEDIAL SOLUTIONS

1/ Spraying – You can return to your room 4 hours after the treatment

2/ Spraying 10 days later – You can return to your room 4 hours after the treatment

Both steps are necessary as eggs are not killed by the products.

PRECAUTIONS TO BE TAKEN BEFORE TREATMENT

- Gather trash and throw it away.
 - If possible, vacuum the premises.
 - Mop the kitchen floor and clean the bathroom/restroom areas without using bleach.
 - Store all uncontaminated food related items (whether new or open) into a plastic garbage bag and tie it tightly. No food should be visible or left outside.
 - Store all clothing and appliances in a plastic garbage bag and leave the bag(s) in the middle of the room.
 - In the fridge, remove all perishables and left-overs and clean it with white vinegar.
 - Cover the air extractors in the kitchen/ bathroom/toilets before the first and the second spraying sessions. Restart the ventilation system 4 hours upon completion of the treatment. Do not cover the smoke detectors.
 - Remove and discard all contaminated food items in tightly tied plastic bags before taking it out.
 - Between the two spraying sessions, do not mop the floors and do not remove the white traces that may appear on surfaces. Preferably sweep or vacuum the dead cockroaches and eggs, then empty the vacuum and throw the vacuum bags away directly into the outdoor trash area.
 - Ventilate your room for at least 1 hour before reoccupying.
- You expose yourself to sanctions if you do not follow the pre-treatment control advice:** your room should be ready to make sure the treatment can be effective, and that's the resident's responsibility.
- As mentioned in our Internal Guidelines, in the event of non compliance with the rules, you will be charged for the additional cleaning fees and the pest control service.**